

Item NIN13001

## 130 Watt Power Inverter

For Technical Questions, Call: 800-837-5994



Failure to follow these safety guidelines may result in personal injury and/or the damage to the unit. It may also void the warranty.



### CONTENTS

1. INTRODUCTION
2. IMPORTANT SAFETY INFORMATION
3. FEATURES AND ACCESSORIES
4. INVERTER USAGE CHART
5. OPERATING THE INVERTER
6. TROUBLESHOOTING
7. SPECIFICATIONS

### 1. INTRODUCTION

Thank you for purchasing this NOS® inverter, a high performance solution to using household power while on the road. When connected to a 12 volt outlet, the inverter efficiently and reliably supplies 115V/60Hz AC power for a wide variety of loads, such as TV sets, gaming systems, cell phones and portable entertainment devices. Our line of power inverters are designed to international quality standards to meet and exceed your performance expectations. With proper care and appropriate usage, this inverter will give you years of dependable service in your car, truck, RV and boat.

### 2. IMPORTANT SAFETY INFORMATION

For safe and optimum performance, the inverter must be installed and used properly. Carefully read and follow the guidelines below:

#### Safety Definitions:

**⚠ DANGER:** Indicates an imminently hazardous situation which, if not avoided, will result in death or serious injury.

**⚠ WARNING:** Indicates an imminently hazardous situation which, if not avoided, could result in death or serious injury.

**⚠ CAUTION:** Indicates an imminently hazardous situation which, if not avoided, may result in minor or moderate injury.

**⚠ CAUTION:** Indicates a potentially hazardous situation, if not avoided, may result in property damage.

#### ⚠ WARNING:

##### READ AND FOLLOW ALL INSTRUCTIONS

Read all instructions before operating product. Failure to follow all instructions listed below may result in electric shock, fire and/or serious injury.

- **AVOID WET CONDITIONS** Do not use in damp environments or expose the unit to rain, water or any other liquids.
- **PROPER CONNECTION** Do not connect the unit to any utility power distribution systems or branch circuits.
- **PROPER TEMPERATURE** Do not use the inverter in temperatures over 104°F (40°C) or under 32°F (0°C).
- **PROPER STORAGE** Store inverter indoors and out of the reach of children when not in use.
- **DO NOT USE** the inverter beyond its rated capacity.
- **ONLY USE** this appliance for the job it was intended for.
- **PROPER COOLING** is essential when operating the inverter. DO NOT place the unit near the vehicle's heat vent or in direct sunlight. DO NOT restrict air flow around the inverter.
- **ALWAYS CHECK** for damaged parts. Ensure all cables, insulation and connectors are in good working condition.
- **USE OF ACCESSORIES** Only use accessories or attachments that are intended for use with this product.
- **EXTENSION CORDS** When using an extension cord only use cords that are rated to carry the current the connected appliance draws. Check to make sure the cord is in good working condition. Refer to the appliance owners manual for wattage information.

- **CONNECTING APPLIANCES** When connecting and using outdoor appliances with the inverter, make sure that the extension cord used is rated for outdoor use.
- **DO NOT OPERATE** inverter and appliances near flammable liquids or in gaseous or explosive atmospheres.

#### ⚠ WARNING:

##### TO REDUCE THE RISK OF FIRE

- DO NOT operate near flammable materials, fumes or gases.
- DO NOT expose to extreme heat or flames.

#### ⚠ CAUTION:

##### TO REDUCE THE RISK OF INJURY OR PROPERTY DAMAGE

- **REMOVE** appliance plug from outlet before working on the appliance.
- **DO NOT** attempt to connect or set up the unit or its components while operating your vehicle. Not paying attention to the road may result in a serious accident.
- **ALWAYS** use the inverter where there is adequate ventilation. Do not block ventilation slots.
- **ALWAYS** turn the inverter OFF by disconnecting it from the power source when not in use.
- **MAKE SURE** the nominal powering voltage is 12 volts DC.
- **WHEN USING** this unit in a vehicle, check the vehicle owner's manual for maximum power rating and recommended output. Do not permanently install in engine compartment. Instead install in a well ventilated area.
- **DO NOT** use with positive ground electrical systems\*. Reverse polarity connection will result in a blown fuse and may cause permanent damage to the inverter and will void warranty. \*The majority of modern automobiles, RVs and trucks are negative ground.\*
- **KEEP IN MIND** that this inverter may not operate very high wattage appliances or equipment that produces heat. Refer to Inverter Usage Chart in this manual.
- **DO NOT** open the inverter there are no user-serviceable parts inside.
- **DO NOT** use this inverter with medical devices. It is not qualified for medical applications.
- **KEEP AWAY** from children. This is not a toy!
- **INSTALL AND OPERATE** unit only as described in this Instruction Manual.

**⚠ WARNING:** This product or its power cord contains lead, a chemical known to the State of California to cause cancer and birth defect or other reproductive harm. Wash hands after handling.

#### ⚠ WARNING:

##### TO REDUCE THE RISK OF ELECTRIC SHOCK

- **DO NOT** connect to AC distribution wiring.
- **DO NOT** make any electrical connections or disconnections in areas designated as IGNITION PROTECTED. This unit is NOT approved for ignition protected areas.
- **NEVER** immerse the unit in water or any other liquid or use when wet.
- **DO NOT** insert foreign objects into the AC outlet or the USB outlet (if provided).

#### ⚠ CAUTION:

##### DO NOT USE THE UNIT ON THE FOLLOWING ITEMS:

- Small nickel-cadmium battery-operated appliances such as flashlights, razors and night lights.
- Battery chargers for battery packs used in hand power tool that have a warning label indicating dangerous voltages are present at the battery terminals.

#### ⚠ CAUTION:

##### RECHARGEABLE DEVICES

- Certain rechargeable devices that are designed to be charged by plugging them directly into an AC receptacle may damage the inverter or the charging circuit.
- When using a rechargeable device be sure to monitor it's temperature for the first ten minutes.
- If excessive heat is produced the device should not be use with the inverter.

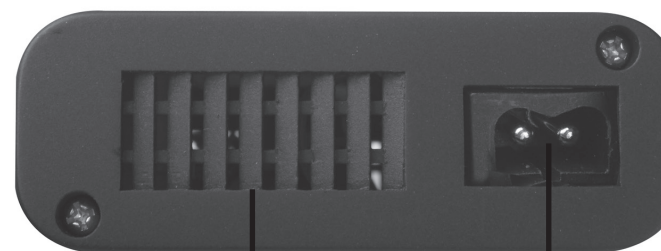
### 3. FEATURES AND ACCESSORIES

These advanced safety features are built into the

#### Power Inverter:

- Electronic overload protection with automatic shutdown
- User-replaceable 15A slow-blow fuse
- Low battery voltage shutdown
- High-input voltage protection with automatic shutdown
- Overheat protection with automatic shutdown
- Output short-circuit protection.

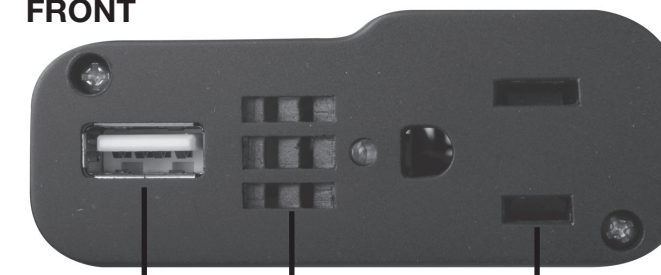
#### BACK



VENTILATION OPENING

DC INPUT: 11V-15V

#### FRONT



VENTILATION OPENING

AC OUTPUT: 120V

**Xtreme USB**  
2.1 amp quick charge port

DC Cable  
Lighter Plug



### 4. INVERTER USAGE CHART

APPLICATION	WATTS
PWR TOOL BATTERY PACKS	2
DIGITAL CAMERA	2
CD PLAYER	2
MP3 PLAYER	2
CELLULAR PHONE	3
14V CORDLESS DRILL CHARGER	8
CELL PHONE/CAMCORDER BATTERY	10
CAMCORDER	10
PORTABLE WORK LIGHT	25
DVD PLAYER	48
MINI STEREO SYSTEM	50
LAPTOP COMPUTER	90

\*Remember to double your wattage when choosing the right size inverter.

\* Wattage shown are approximate values.

### WARRANTY

POWERSTATION, LLC WARRANTS TO ITS CUSTOMERS THAT THE COMPANY'S NOS® BRANDED PRODUCTS ARE FREE FROM DEFECTS IN WORKMANSHIP AND MATERIALS.

PowerStation, LLC will repair or replace its NOS® branded products which fail to give satisfactory service due to defective workmanship or materials, based upon the terms and conditions of the following described warranty plans attributed to that specific product. This product carries a ONE-YEAR warranty. During this warranty period, PowerStation, LLC will repair or replace at our option any part or unit which proves to be defective in material or workmanship.

#### Other Important Warranty Information:

This warranty does not cover damage to equipment or tools arising from alteration, abuse, misuse, damage and does not cover any repairs or replacement made by anyone other than PowerStation, LLC. The foregoing obligation is PowerStation, LLC's sole liability under this or any implied warranty and under no circumstances shall we be liable for any incidental or consequential damages.

Note: Some states do not allow the exclusion or limitation of incidental or consequential damages, so the above limitation or exclusion may not apply to you. If you have any questions about warranty service, please contact PowerStation, LLC. This warranty gives you specific legal rights and you may also have other rights which vary from state to state.

PowerStation, LLC  
800-837-5994  
Monday - Friday 9am to 5pm EST  
P.O. Box 1203  
Travelers Rest, South Carolina 29690

NOS® and the NOS® logo are registered trademarks of Holley Performance Products Inc.

# Item NIN13001

## 130 Watt Power Inverter

For Technical Questions, Call: 800-837-5994



Failure to follow these safety guidelines may result in personal injury and/or the damage to the unit. It may also void the warranty.



### 5. OPERATING THE INVERTER

#### Operation of the USB Charging Port

1. Connect the inverter to a functioning 12V DC power source as described in this instruction manual. If using the 12V DC vehicle accessory adapter, rotate the vehicle accessory plug slightly to make sure there is good contact. Make sure there is adequate space for proper inverter ventilation.
- Plug the USB-powered device into the inverter's USB charging port and operate normally.

**NOTE:** This unit's USB charging port does not support data communication. It only provides 5V / 2.1A DC power to an external USB-powered device. Remember to disconnect the inverter from any power source when not in use.

**NOTE:** Not all mobile phones are provided with a charging cable; they are normally data cables which are not supported by this device. Please check with your mobile phone manufacturer for the correct charging cable.

#### Using the DC Cable

Due to the limitations of 12V outlets in vehicles or boats, the Power Inverter should only be used to supply AC power to devices that require 130W (approximately 1.0A) or less.

#### CAUTION:

The Power Inverter must only be connected to a battery that has a nominal output of 12V. It will not operate if connected to a 6V battery and may be damaged if connected to a battery with 16V or more.

#### Choosing a Location

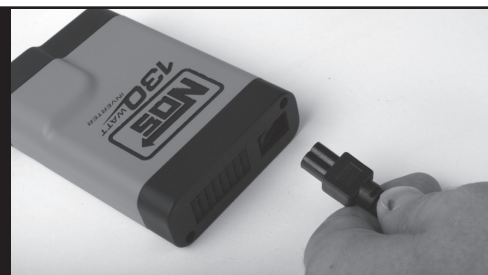
For best performance, place the inverter on a flat surface in a location that is:

DRY	Do not expose the inverter to water, rain, snow or spray.
COOL	Operate the inverter in ambient temperature between 32°F and 104°F (0°C and 40°C). Keep it away from heating vents and direct sunlight.
WELL-VENTILATED	For proper cooling, allow at least 2" (5 cm) of clearance around the inverter.
CLEAN / FREE OF DUST AND DIRT	Choose a location that is free of any debris that could get into the inverter.
SAFE	Do not install the inverter in a compartment with batteries or flammable liquids, such as gasoline, or explosive vapours.

#### Connecting for Load Under 100W

1. Plug the DC cable with lighter plug into the Power Inverter's DC cable port. See Figure 1.
2. Insert the lighter plug into the vehicle's 12V outlet.
3. Plug the device that you wish to operate into the Power Inverter.

**Figure 1**  
Connecting the Inverter to DC plug with lighter plug.



#### CAUTION:

#### REVERSE POLARITY DAMAGE

When plugging in the DC cable, ensure that the plug aligns with the DC cable port. Failure to do so will result in reverse polarity and a blown fuse.

#### Inverter Operation

Plug the device(s) that you wish to operate into the AC outlet, and switch the device(s) on (if necessary).

#### Operating Guidelines

- As the battery is used, its voltage will begin to fall. When the Power Inverter determines that the voltage at its DC input has dropped to 10-11V, the inverter will automatically shut down and the light will glow red, indicating a fault. This prevents the battery from being damaged. If this occurs, turn off any devices that are being powered by the Power Inverter.

**IMPORTANT:** Vehicle batteries are designed to provide brief periods of very high current needed for engine starting. They are not designed to handle constant deep discharge. Operating the Power Inverter from a vehicle battery regularly, until low-voltage shutdown occurs, will shorten the life of the battery.

- If an AC device that is rated higher than 130W is plugged into the Power Inverter, the inverter will shut down, and the red fault light will come on.
- If the power Inverter exceeds a safe operating temperature due to insufficient ventilation or a high-temperature environment, it will automatically shut down, and the red fault light will come on.
- If a defective battery charging system causes the battery voltage to rise to dangerously high levels, the power Inverter will automatically shut down, and the red fault light will come on.

#### CAUTION:

Although the Power Inverter provides protection against over-voltage, it may still be damaged if the input voltage exceeds 16V. In the event of an overload, low battery voltage, or overheating, the Power Inverter will automatically shut down.

#### CAUTION:

Although the Inverter can supply momentary surge power up to 260W, some appliances may exceed the capabilities of the Inverter and trigger the safety overload shutdown circuit. This shutdown is intermittent. It will automatically restart, then shutdown like a flashlight. We recommend you to check the output of your appliance.

#### CAUTION:

The ideal conditions to operate the unit is when the ambient temperature is around 77°F (25°C), this will help to prevent an overheat shutdown caused by high temperatures.

#### Battery Operating Time

Operating time will vary depending on the charge level and capacity of the battery and the power level that is being drawn by the particular AC load. An operating time of 4 to 5 hours or more can be expected with a typical vehicle battery and a 130W load. When using a vehicle's battery as a power source, it is strongly recommended that the vehicle be started every hour to two in order to recharge the battery before its capacity drops too low. The Power Inverter can operate while the engine is running, but the normal voltage drop that occurs when the engine is started may trigger the inverter's low voltage shutdown feature.

#### Interference with Electronic Equipment

Most AC devices operate with the Power Inverter just as they would with household AC power. Two possible exceptions are described below.

#### Buzzing Sound in Audio Systems and Radios

Some inexpensive stereo systems and AM-FM radios have inadequate internal power supply filtering, and may buzz slightly when powered by the Power Inverter. Generally, the only solution is to use an audio device that has a higher quality filter.

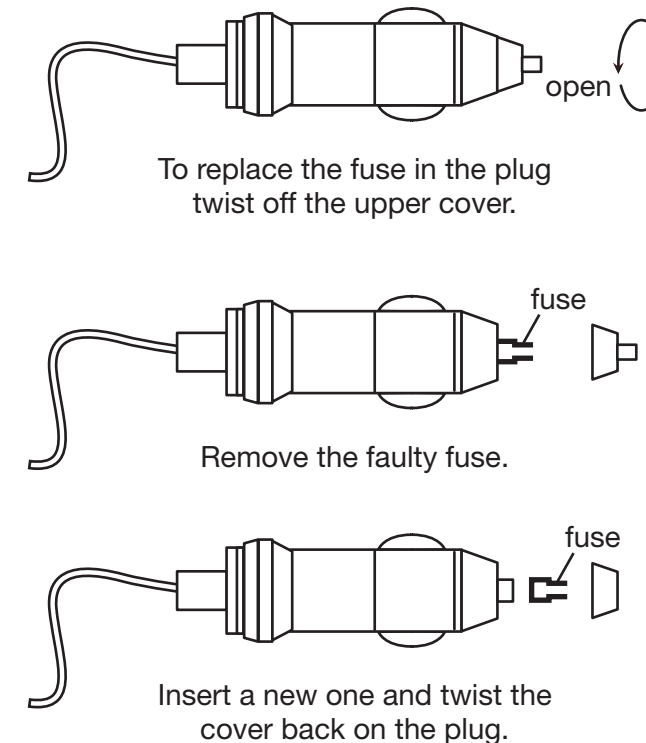
#### Television Interference

The Power Inverter is shielded in order to minimize its interference with television signals. However, in the case of weak TV signals, interference may be visible in the form of lines scrolling across the screen. The following actions should minimize or eliminate the problem:

- Increase the distance between the Power Inverter and the TV, antenna and cables.
- Adjust the orientation of the Power Inverter and the television, antenna and cables.
- Maximize the TV signal strength by using a better antenna, using shielded antenna cable whenever possible.

#### Replacing the Fuse

The Power Inverter has a replaceable 15A slow blow fuse. Remove the blown fuse from lighter plug and replace it with a new 15A slow blow fuse.



### 6. TROUBLESHOOTING

POSSIBLE CAUSE	REMEDY
<b>PROBLEM: AC product will not operate, no inverter lights are on.</b>	
Battery is defective.	Check battery and replace if required.
Loose connections.	Check connections.

#### PROBLEM: Measured inverter output is too low.

Battery voltage is too low. Recharge battery.

#### PROBLEM: The AC device will not operate and the red fault light is on.

Connected AC devices are rated at more than the inverter's continuous power rating; an overload shutdown has occurred. Use a device that has a power rating that is less than the inverter's continuous power rating.

The AC device's starting power ratings is higher than inverter's surge power ratings; an overload shutdown occurs because of high starting surge power. The AC device's starting power ratings must be lower than inverter's surge power ratings.

The battery is discharged.

Recharge the battery.

The inverter has overheated due to poor ventilation, and has shut down.

Unplug the inverter from the DC socket, and allow it to cool for 15 minutes. Remove any objects that may be covering the inverter. Move the inverter to a cooler place. Reduce the load if continuous operation is required. Restart.

### 7. SPECIFICATIONS

Specifications are subject to change without notice.

#### AC POWER OUT

AC OUTPUT VOLTAGE (NOMINAL)	115V AC
USB OUTPUT	5V / 2.1A
CONTINUOUS AC OUTPUT POWER	130W
MAXIMUM AC OUTPUT SURGE POWER	260W
AC OUTPUT FREQUENCY	60 ± 1 HZ
AC OUTPUT WAVEFORM	MODIFIED SINE WAVE

#### DC POWER SPECIFICATIONS

DC INPUT VOLTAGE RANGE	11-15V DC
BATTERY DRAIN WITH NO AC LOAD	<0.3 A (AT 12V INPUT)
EFFICIENCY (MAXIMUM)	>85%
LOW BATTERY SHUTDOWN RANGE	10 - 11V DC
HIGH BATTERY SHUTDOWN RANGE	15 - 16.3V DC

#### PHYSICAL SPECIFICATIONS

AMBIENT OPERATING TEMPERATURE RANGE	32°F-104°F (0°C-40°C)
DIMENSIONS (LxWxH)	4.13" x 2.80" x 1.10" (105 x 71 x 28 MM)
WEIGHT	0.25LB (125G)