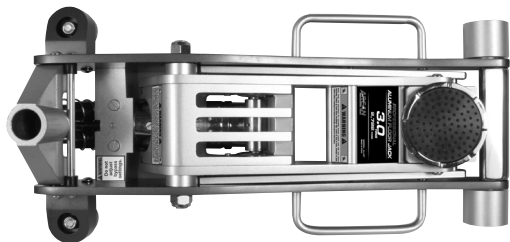


IMPORTANT: if you have any problems or concerns with our product, please call 1-800-879-7316 (toll-free) for immediate assistance. Please do not call the store where you purchased this product.

ALJ3T 3 TON CAPACITY ALUMINUM SERVICE JACK

PARTS BREAKDOWN AND OPERATING MANUAL



PRIOR TO OPERATION

Air may become trapped in the hydraulic system during transit.

To purge air:

1. Open release valve by turning handle counterclockwise.
2. Pump handle rapidly 4 full strokes. This will expel air that may have entered hydraulic fluid passages during transit.
3. Close release valve by rotating handle clockwise and pump handle.
4. If lift arm raises to full height, jack is ready for use. If not, repeat this procedure or follow trouble shooting instructions provided.

MAINTENANCE AND INSPECTION

IMPORTANT: When adding or replacing hydraulic fluid, always use a quality hydraulic fluid. DO NOT use brake fluid, alcohol, glycerin, detergent motor oil, or dirty oil as improper fluid can cause serious internal damage to jack.

To add hydraulic fluid: With saddle fully lowered and jack on level ground, remove filler plug. The hydraulic fluid should just cover the surface of the internal cylinder visible through the hole. Do not overfill. Replace filler plug. If low, add hydraulic fluid as needed.

Maintenance and Inspection: The owner and/or user must maintain and inspect the jack in accordance with the manufacturer's instructions.

SPECIFICATIONS:

Net Weight:	26.3kg (58lbs)
Lifting Range:	9.7cm to 46cm (3.77in – 18.11in)
Overall Length:	67cm (26.37in)
Overall Width:	33cm (13in)
Min Height:	9.67cm (3.77in)
Max Height:	46cm (18.11in)
Saddle Diameter:	11.5cm (4.52in)



THIS OPERATING MANUAL CONTAINS IMPORTANT SAFETY INFORMATION. READ CAREFULLY AND UNDERSTAND ALL INFORMATION BEFORE OPERATING TOOL.

SAVE THIS MANUAL FOR FUTURE USE.

! WARNING



STUDY, UNDERSTAND, AND FOLLOW ALL INSTRUCTIONS BEFORE OPERATING THIS DEVICE. DO NOT EXCEED THE RATED CAPACITY. USE ONLY ON HARD LEVEL SURFACE. LIFT ONLY ON AREAS OF THE VEHICLE AS SPECIFIED BY THE MANUFACTURER.

IMMEDIATELY AFTER LIFTING, SUPPORT THE VEHICLE WITH APPROPRIATE MEANS.

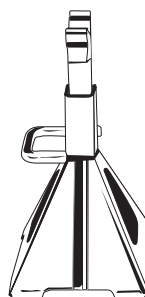
DO NOT MOVE OR DOLLY THE VEHICLE WHILE ON THE JACK.

FAILURE TO HEED THESE MARKINGS MAY RESULT IN PERSONAL INJURY AND/ OR PROPERTY DAMAGE. THIS IS A LIFTING DEVICE ONLY.

NO ALTERATIONS SHALL BE MADE TO THIS PRODUCT.

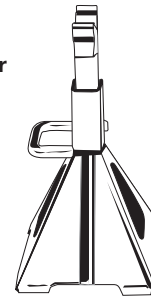
! WARNING

FOR YOUR SAFETY AND TO PREVENT INJURY:

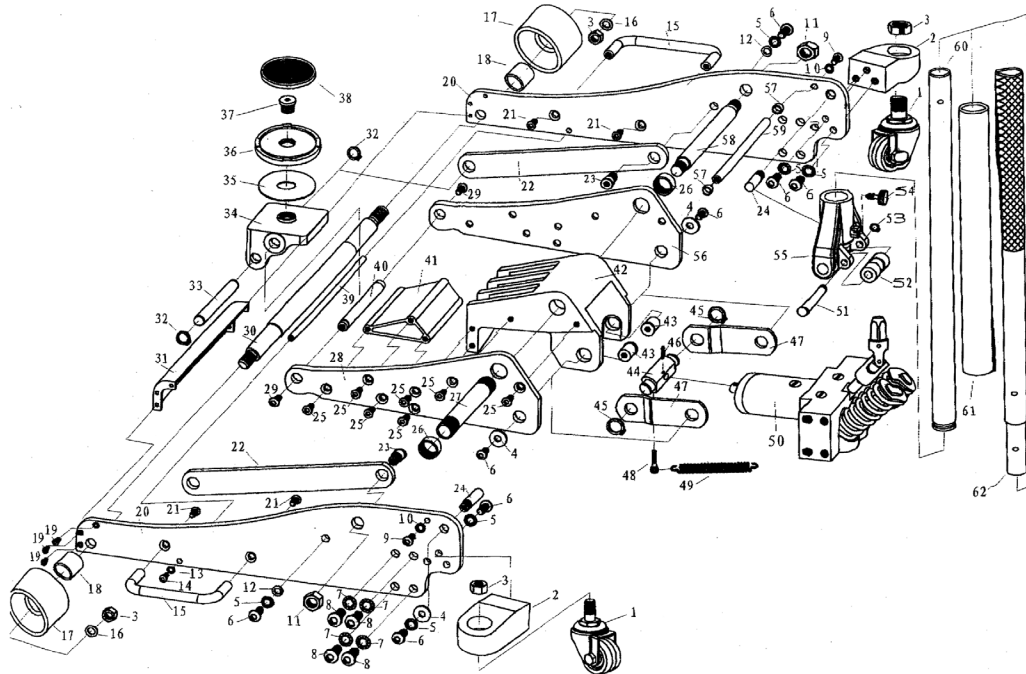


Use Service Jack for lifting purposes ONLY.

Always support vehicle with jack stands.



REPLACEMENT PARTS



REF #	PART #	DESCRIPTION	QTY	REF #	PART #	DESCRIPTION	QTY
1	ALJ3T01	rear caster	2	32		retaining ring 16	2
2		rear caster bracket	2	33		radius linkage axle	1
3	ALJ3T03	locking nut M12	4	34		saddle base	1
4		washer 10	4	35		gasket of saddle	1
5		tooth washer 10	10	36	ALJ3T36	saddle	1
6		bolt M10x25	10	37		saddle bolt	1
7		tooth washer 12	8	38	ALJ3T38	saddle pad	1
8		bolt M12x25	8	39		rod	1
9		bolt M8x25	2	40		saddle base axle	1
10		tooth washer 8	2	41		lift arm core	1
11		locking nut M18	2	42		lift arm mounting plate	1
12		washer 10	2	43		linkage pin	2
13		tooth washer 6	2	44		linkage block	1
14		bolt M6x25	2	45		retaining ring 22	2
15	ALJ3T15	handle	2	46		pin 4x40	1
16		washer	2	47		linkage	2
17	ALJ3T17	front wheel	2	48		bolt M6x25	2
18		bushing	2	49		lift arm return spring	2
19		bolt M6x20	6	50	ALJ3T50	power unit assembly	1
20		side plate	2	51		pump roller axle	1
21	ALJ3T21	bolt M8x25	4	52		pump roller	1
22		radius linkage	2	53		retaining ring 12	1
23		radius linkage axle bolt	2	54	ALJ3T54	handle set screw	1
24		yoke axle	2	55	ALJ3T55	handle yoke	1
25		bolt M10x25	14	56		lift arm right side plate	1
26		screw sleeve	2	57		rubber guard	2
27		axle sleeve	1	58		lift arm axle	1
28		lift arm left side plate	1	59		rod	1
29		bolt M10x16	2	60	ALJ3T60	lower handle section	1
30		front wheel axle	1	61	ALJ3T61	handle bumper	1
31		baffle	1	62	ALJ3T62	upper handle section	1

WARRANTY NOTICE

Warranty Policy — 1 Year

This service jack is covered under a 1 year warranty when used as recommended. Only those items listed with a Part # are available for purchase. For assistance with the operation or the availability of replacement parts, contact our Parts and Warranty Department at 1-800-879-7316. Please have available a copy of your receipt, the model number of the product, and specific details regarding your question.

WARRANTY INFORMATION

We want to know if you have any concerns with our products. If so, please call toll-free for immediate assistance. Please do not call the store where you purchased this product.

1-800-879-7316

Monday - Friday 9am to 5pm EST
P.O. Box 58, Travelers Rest, SC 29690

OWNER/USER RESPONSIBILITY

The owner and/or user must have a thorough understanding of the manufacturer's operating instructions and warnings before using the floor jack. Personnel involved in the use and operation of equipment shall be careful, competent, trained, and qualified in the safe operation of the equipment and its proper use when servicing motor vehicles and their components. Warning information should be emphasized and understood. If the operator is not fluent in English, the manufacturer's instructions and warnings shall be read to and discussed with the operator in the operator's native language by the purchaser/owner, making sure that the operator comprehends its contents. Owner and/or user must study and maintain for future reference the manufacturer's instructions and pertinent warning information. Owner and/or user is responsible for keeping all warning labels and instruction manuals legible and intact. Replacement labels and literature are available from the manufacturer.

- saddle will contact load firmly and load is centered so it cannot slip. Operate jack handle until saddle approaches the load. Once again check to see that saddle is correctly positioned. Raise load to desired height. Place jack stands of appropriate capacity under the vehicle. **DO NOT CRAWL UNDER VEHICLE WHILE LIFTING VEHICLE OR PLACING OR REMOVING JACK STANDS!** Place jack stands at vehicle manufacturer's recommended lift areas that provide stable support for the raised vehicle.
- To lower load: Open release valve **VERY SLOWLY** (by turning handle counterclockwise). When release valve is opened, saddle and load will be lowered. Lower the vehicle slowly so as not to shock load the jack stands. Once repairs are completed, raise vehicle enough to remove jack stands. Lower vehicle very slowly.

CAUTION: Keep hands or feet away from the hinge mechanism of the jack.

LUBRICATION

All moving joints require lubrication on a regular maintenance schedule. Remove handle and grease the lower end of handle where it rotates in the handle socket. Using a grease gun, grease the lift arm pivot shaft grease fitting until grease appears at the end of the shaft. Grease all lift arm linkages, front wheels and rear casters.

OPERATING INSTRUCTIONS

IMPORTANT: Before attempting to raise a vehicle, check vehicle service manual for recommended lifting surfaces.

- To raise load: Close release valve tightly (by turning handle clockwise). Position jack under load so that

PROPER STORAGE

It is recommended that the jack be stored in a dry location with all wheels touching the ground on a relatively level surface.

TROUBLESHOOTING

Important: Service jacks are self-contained devices used for lifting, but not sustaining, a partial vehicular load. In accordance with ASME PALD standard, section 10-4.1.2 Load Sustaining Test: "A load not less than the rated capacity shall not lower more than 1/8" (3.18mm) in the first minute, nor a total of .1875" (4.76mm) in 10 minutes." Leak down within this range is considered normal operation and is NOT a warrantable defect.

PROBLEMS					SOLUTIONS
Jack will not lift load or leaks down excessively	Jack will not lift to its full height	Jack will not lower completely	Jack will not lift smoothly or jack feels spongy	Jack will not hold load or handle rises	
◆					The release valve is not closed. Turn the valve clockwise tightly. If this does not work, remove handle, lubricate handle receptacle and handle end, then retry.
◆	◆				Low on hydraulic fluid. Refill the jack to the correct level of hydraulic fluid.
◆					Pump seals or back-up ring may be defective. Clean hydraulic fluid passages, replace seals and refill hydraulic fluid. (Must be serviced by qualified service center)
	◆		◆		The hydraulic system has trapped air. Open the release valve, pump handle rapidly (4) full strokes to purge air, close release valve.
		◆			Return spring is broken or linkages are binding. Replace spring if broken. Grease pivot shaft and all lift arm linkages.
				◆	Discharge ball is not sealing hydraulic system and oil may be dirty. Manually flush hydraulic system. Open the release valve, as required, to raise and lower the lift arm. Manually raise and lower lift arm.